

**Lower Thames Crossing  
9.205 Issue Specific Hearing 11  
Supporting Information  
item 3a ii)**

Volume 9

**DATE: November 2023**

Planning Inspectorate Scheme Ref: TR010032  
Application Document Ref: TR010032/APP/9.205

**VERSION: 1.0**

---

# Lower Thames Crossing

## 9.205 Issue Specific Hearing 11 Supporting Information item 3a ii)

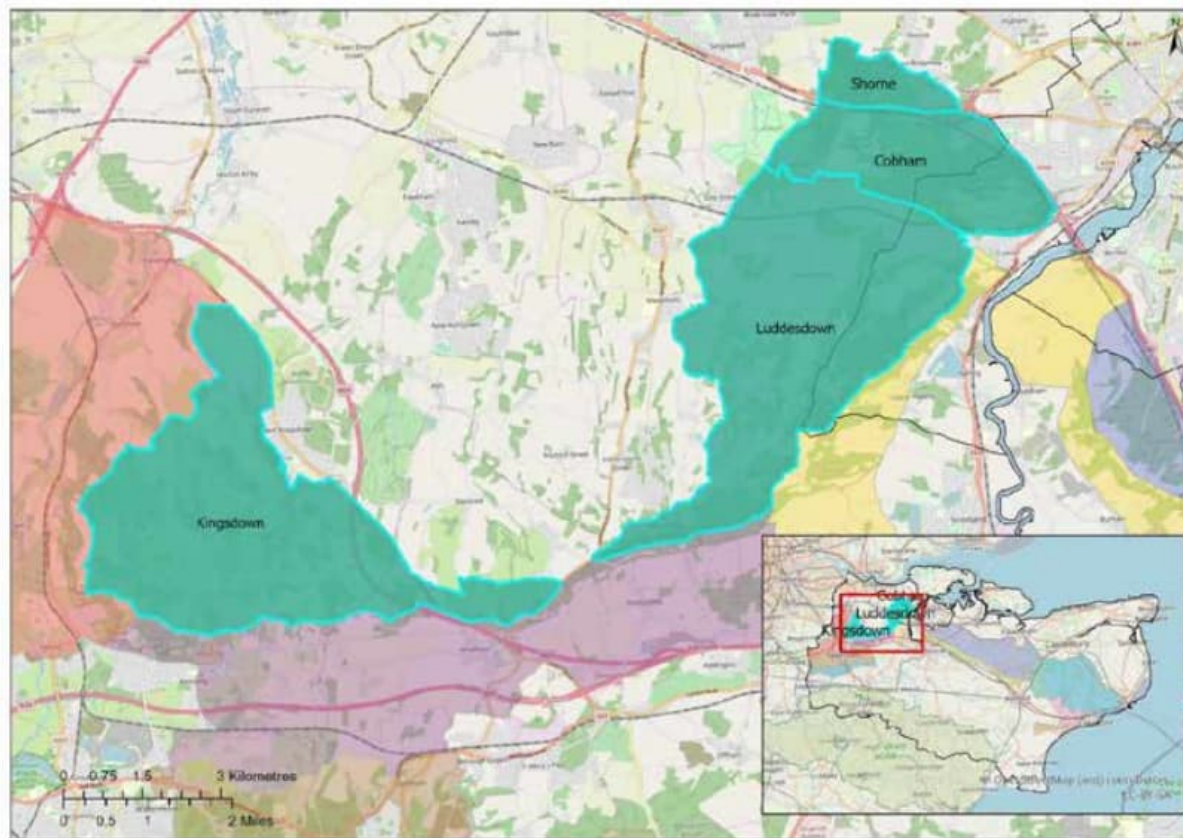
### List of contents

	Page number
<b>1 Introduction .....</b>	<b>1</b>

# 1 Introduction

- 1.1.1 This document is submitted to the Planning Inspectorate on behalf of the Secretary of State in relation to an application made by National Highways (the Applicant) under section 37 of the Planning Act 2008.
- 1.1.2 The application is for the grant of development consent for the A122 Lower Thames Crossing. Should development consent be granted, the draft A122 (Lower Thames Crossing) Development Consent Order (Application Document 3.1) (the draft Order) will be made by the Secretary of State (subject to any modifications considered appropriate).
- 1.1.3 This document includes two figures extracted from Kent Downs AONB Landscape Character Assessment (Update 202 Revised and Published 2023) published in: [Kent-Downs-AONB-Landscape-Character-Assessment-2020.pdf \(kentdowns.org.uk\)](https://kentdowns.org.uk/Kent-Downs-AONB-Landscape-Character-Assessment-2020.pdf), to support Issue Specific Hearing 11 item 3a ii).

# West Kent Downs Local Character Areas



*Location map for West Kent Downs LCA, also showing Local Character Areas of Kingsdown, Luddesdown, Cobham and Shorne*

# West Kent Downs (sub areas Cobham and Shorne)

